



Accessible Space, Inc.

2550 University Avenue West, Suite 330 N | St. Paul, Minnesota 55114

OUR MISSION HOUSING WITH CARE

The mission of Accessible Space, Inc. (ASI) is to provide accessible, affordable, assisted, supportive and independent living opportunities for persons with physical disabilities and brain injuries as well as seniors. This mission is accomplished through the development and cost-effective management of accessible, affordable housing, assisted/supportive/independent living and rehabilitation services.

ACKNOWLEDGEMENTS FUNDING AND SUPPORT

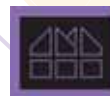
Accessible Space, Inc. (ASI) gratefully acknowledges the following organizations for their funding and/or support:

U.S. Department of Housing and Urban Development (HUD); The City of Sante Fe, New Mexico; Federal Home Loan Bank of Dallas' Affordable Housing Program/First National Bank of Santa Fe; Homeward Bound, Inc.; McCune Charitable Foundation; New Mexico Mortgage Finance Authority; Sante Fe Affordable Housing Roundtable.



Committed to the success of equal housing opportunities throughout the nation

ASI



Accessible Space, Inc. (ASI): Sponsor, Developer and Management Agent

HOMEWARD BOUND APARTMENTS SANTE FE, NEW MEXICO

Accessible, Affordable Apartments For Adults With Qualifying Disabilities

3454 Cerillos Road
Sante Fe, New Mexico 87507



Accessible Space, Inc.
HOUSING WITH CARE





HOMeward BOUND APARTMENTS SANTE FE, NEW MEXICO

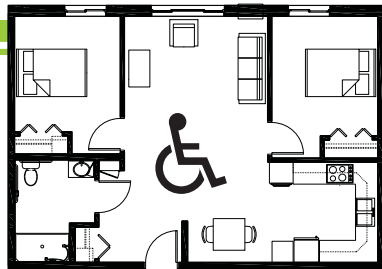
Accessible, Affordable Apartments For Adults With Qualifying Disabilities

AFFORDABLE

- Qualifying households pay 30% of adjusted gross monthly income for rent
- Rent is subsidized by the U.S. Department of Housing and Urban Development (HUD)-Income limits apply
- Rent includes: Heat, water, sewer, trash & snow removal

BASIC QUALIFICATIONS

- One household member must have a qualifying disability
- Applicants are screened for credit, rental and criminal history
- Households must be income qualified (income limits apply and security deposit required)



APARTMENT FEATURES

- 20 one and two bedroom apartments
- Accessible, spacious kitchens
- Large, accessible bathrooms
- Carpeted bedrooms and living room
- Generous closet & storage space
- Air conditioned apartments and window blinds
- Roll-in shower

BUILDING FEATURES

- Large, open lobby/entry
- Controlled access entry system
- Elevator service
- Spacious community room
- Library/game room
- Outdoor patio with gas grill
- On-street laundry facilities
- Off-street parking

3454 Cerrillos Road
Santa Fe, New Mexico 87507



CONVENIENT NEIGHBORHOOD LOCATION

- Grocery stores, shopping & restaurants
- Banking Services
- Hospitals, medical & professional clinics
- Churches

For more information or to request a housing application, please call

- toll-free 1-800-466-7722
- tty/tdd 1-800-627-3529

Apply online www.accessiblespace.org

Accessible Space, Inc. (ASI)

2550 University Avenue West, Suite 330 North
Saint Paul, Minnesota 55114

