



# Accessible Space, Inc.

2550 University Avenue West, Suite 330 N | St. Paul, Minnesota 55114

## OUR MISSION HOUSING WITH CARE

The mission of Accessible Space, Inc. (ASI) is to provide accessible, affordable, assisted, supportive and independent living opportunities for persons with physical disabilities and brain injuries as well as seniors. This mission is accomplished through the development and cost-effective management of accessible, affordable housing, assisted/supportive/independent living and rehabilitation services.

## ACKNOWLEDGEMENTS FUNDING AND SUPPORT

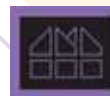
Accessible Space, Inc. (ASI) gratefully acknowledges the following organizations for their funding and/or support:

The U.S. Department of Housing and Urban Development (HUD); The Bush Foundation; Federal Home Loan Bank of Des Moines' Affordable Housing Program JJ U.S. Bankcorp; The City of Rapid City; and The South Dakota Community Development Block Grant (CDBG) Program.



Committed to the success of equal housing opportunities throughout the nation

ASI



Accessible Space, Inc. (ASI): Sponsor, Developer and Management Agent

## GALAXY APARTMENTS RAPID CITY, SOUTH DAKOTA

***Accessible, Affordable Apartments For Adults With Qualifying Disabilities***

1820 Galaxy Drive  
Rapid City, South Dakota 57701



**Accessible Space, Inc.**

HOUSING WITH CARE



# AccessibleSpace, Inc.

## GALAXY APARTMENTS RAPID CITY, SOUTH DAKOTA

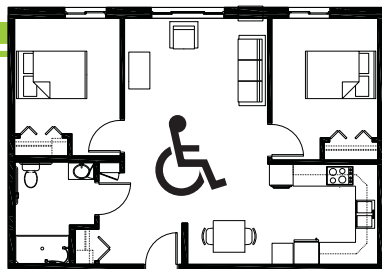
*Accessible, Affordable Apartments For Adults With Qualifying Disabilities*

### AFFORDABLE

- Qualifying households pay 30% of adjusted gross monthly income for rent
- Rent is subsidized by the U.S. Department of Housing and Urban Development (HUD)-Income limits apply
- Rent includes: Heat, water, sewer, trash & snow removal

### BASIC QUALIFICATIONS

- One household member must have a qualifying disability
- Applicants are screened for credit, rental and criminal history
- Households must be income qualified (income limits apply and security deposit required)



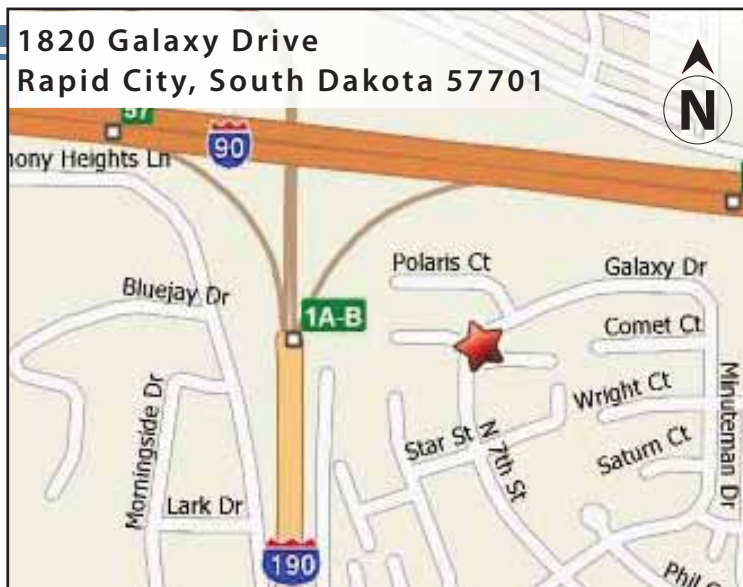
### APARTMENT FEATURES

- 20 accessible, accessible one and two bedroom apartments
- Large accessible bathrooms
- Carpeted bedrooms and living room
- Roll-in shower
- Lever-action handles on doors
- Lowered light switches and raised outlets

### BUILDING FEATURES

- Large open lobby/entry
- Controlled access hands free entry system
- Elevator service
- Spacious community room
- Trash chute on upper floors
- Outdoor patio
- On-site laundry facilities
- Off-street parking

1820 Galaxy Drive  
Rapid City, South Dakota 57701



### CONVENIENT NEIGHBORHOOD LOCATION

- Grocery stores, shopping & restaurants
- Banking Services
- Hospitals, medical & professional clinics
- Churches

For more information or to request a housing application, please call

- toll-free 1-800-466-7722
- tty/tdd 1-800-627-3529

Apply online [www.accessiblespace.org](http://www.accessiblespace.org)

Accessible Space, Inc. (ASI)

2550 University Avenue West, Suite 330 North  
Saint Paul, Minnesota 55114

