



Accessible Space, Inc.

2550 University Avenue West, Suite 330 N | St. Paul, Minnesota 55114

OUR MISSION HOUSING WITH CARE

The mission of Accessible Space, Inc. (ASI) is to provide accessible, affordable, assisted, supportive and independent living opportunities for persons with physical disabilities and brain injuries as well as seniors. This mission is accomplished through the development and cost-effective management of accessible, affordable housing, assisted/supportive/independent living and rehabilitation services.

ACKNOWLEDGEMENTS FUNDING AND SUPPORT

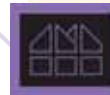
Accessible Space, Inc. (ASI) gratefully acknowledges the following organizations for their funding and/or support:

The U.S. Department of Housing and Urban Development (HUD); Burlington Northern Foundation; City of Spokane-More Homes Program; Designs For Independent Living, Inc.; Federal Home Loan Bank (FHLB) of Seattle Affordable Housing Program/Washington Trust Bank; First Interstate Bank SAFECO; U.S. Bank of Spokane; Washington Department of Community Trade and Economic Development; and the Washington Department of Social and Health Services.



Committed to the success of equal housing opportunities throughout the nation

ASI



Accessible Space, Inc. (ASI):
Sponsor, Developer and
Management Agent

EAGLE CREST ESTATES SPOKANE, WASHINGTON



***Accessible, Affordable Apartments For
Adults With Qualifying Disabilities***

811 South Hatch Street
Spokane, Washington 99202



Accessible Space, Inc.
HOUSING WITH CARE

Accessible Space, Inc.

EAGLE CREST ESTATES SPOKANE, WASHINGTON

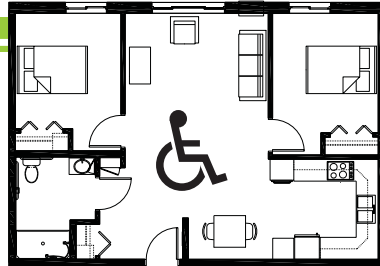
Accessible, Affordable Apartments For Adults With Qualifying Disabilities

AFFORDABLE

- Qualifying households pay 30% of adjusted gross monthly income for rent
- Rent is subsidized by the U.S. Department of Housing and Urban Development (HUD)-Income limits apply
- Rent includes: Heat, water, sewer, trash & snow removal

BASIC QUALIFICATIONS

- One household member must have a qualifying disability
- Applicants are screened for credit, rental and criminal history
- Households must be income qualified (income limits apply and security deposit required)

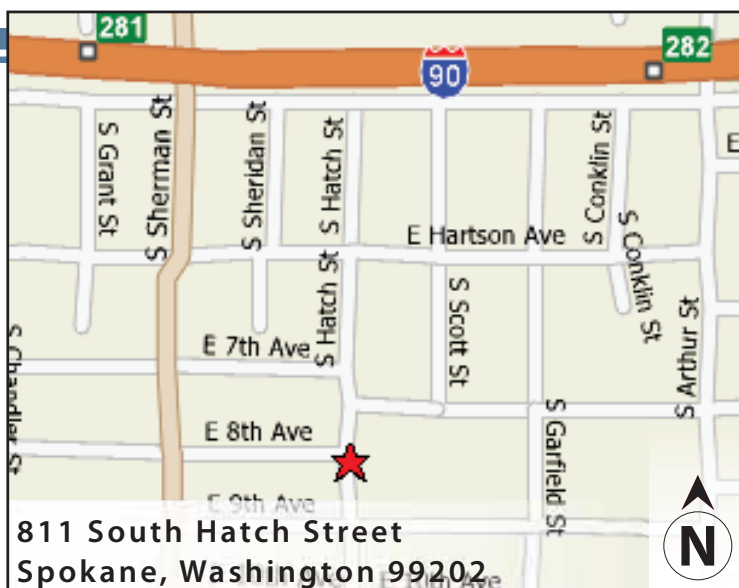


APARTMENT FEATURES

- 21 accessible, 1 & 2 bedroom apartments
- Wheelchair accessible, spacious kitchens
- Large, accessible bathroom with roll-in shower
- Generous closet & storage space
- Carpeted bedroom & living room

BUILDING FEATURES

- Accessible main entrance
- Controlled access entry system
- Large community room and outdoor patio
- On-site laundry facilities
- Raised electrical outlets & lowered light switches



CONVENIENT NEIGHBORHOOD LOCATION

- Grocery stores, shopping & restaurants
- Banking Services
- Hospitals, medical & professional clinics
- Churches

For more information or to request a housing application, please call

- toll-free 1-800-466-7722
- tty/tdd 1-800-627-3529

Apply online www.accessiblespace.org

Accessible Space, Inc. (ASI)

2550 University Avenue West, Suite 330 North
Saint Paul, Minnesota 55114

