



# Accessible Space, Inc.

2550 University Avenue West, Suite 330 N | St. Paul, Minnesota 55114

## OUR MISSION HOUSING WITH CARE

The mission of Accessible Space, Inc. (ASI) is to provide accessible, affordable, assisted, supportive and independent living opportunities for persons with physical disabilities and brain injuries as well as seniors. This mission is accomplished through the development and cost-effective management of accessible, affordable housing, assisted/supportive/independent living and rehabilitation services.

## ACKNOWLEDGEMENTS FUNDING AND SUPPORT

Accessible Space, Inc. (ASI) gratefully acknowledges the following organizations for their funding and/or support:

The U.S. Department of Housing and Urban Development (HUD); The Bush Foundation; North Dakota Department of Human Services; Stutsman County; and The City of Jamestown.



Committed to the success of equal housing opportunities throughout the nation



Accessible Space, Inc. (ASI):  
Sponsor, Developer and  
Management Agent

## DEWEY APARTMENTS JAMESTOWN, NORTH DAKOTA



***Accessible, Affordable Apartments For  
Adults With Qualifying Disabilities***

1215 8th Avenue North East  
Jamestown, North Dakota 58401



**Accessible Space, Inc.**  
HOUSING WITH CARE

## DEWEY APARTMENTS JAMESTOWN, NORTH DAKOTA

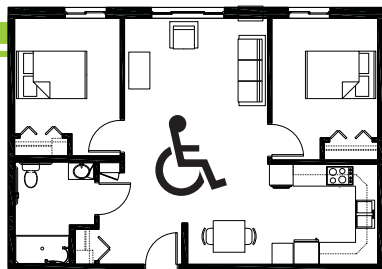
*Accessible, Affordable Apartments For Adults With Qualifying Disabilities*

### AFFORDABLE

- Qualifying households pay 30% of adjusted gross monthly income for rent
- Rent is subsidized by the U.S. Department of Housing and Urban Development (HUD)-Income limits apply
- Rent includes: Heat, water, sewer, trash & snow removal

### BASIC QUALIFICATIONS

- One household member must have a qualifying disability
- Applicants are screened for credit, rental and criminal history
- Households must be income qualified (income limits apply and security deposit required)



### APARTMENT FEATURES

- 18 accessible, one and two bedroom apartments
- Accessible, spacious kitchens
- Large, accessible bathrooms
- Roll-in shower
- Carpeted bedroom and living room

### BUILDING FEATURES

- Large, open entry/lobby
- Controlled access, hands free entry system
- Large community room
- Outdoor patio
- On-site laundry facilities
- Trash chute on upper floor



### CONVENIENT NEIGHBORHOOD LOCATION

- Grocery stores, shopping & restaurants
- Banking Services
- Hospitals, medical & professional clinics
- Churches

For more information or to request a housing application, please call

- toll-free 1-800-466-7722
- tty/tdd 1-800-627-3529

Apply online [www.accessiblespace.org](http://www.accessiblespace.org)

Accessible Space, Inc. (ASI)

2550 University Avenue West, Suite 330 North  
Saint Paul, Minnesota 55114

