



Accessible Space, Inc.

2550 University Avenue West, Suite 330 N | St. Paul, Minnesota 55114

OUR MISSION HOUSING WITH CARE

The mission of Accessible Space, Inc. (ASI) is to provide accessible, affordable, assisted/supportive and independent living opportunities for persons with physical disabilities and brain injuries, as well as seniors. This mission is accomplished through the development and cost-effective management of accessible, affordable housing, as well as the provision of assisted/supportive living and rehabilitation services.

ACKNOWLEDGEMENTS FUNDING AND SUPPORT

Accessible Space, Inc. (ASI) gratefully acknowledges the following organizations for their funding and/or support:

The U.S. Department of Housing and Urban Development (HUD); The City of Sioux Falls, South Dakota CDBG Program; and The Federal Home Loan Bank of Des Moines' Affordable Housing Program/U.S. Bank



Committed to the success of equal housing opportunities throughout the nation

ASI



Accessible Space, Inc. (ASI):
Sponsor, Developer and
Management Agent

CROCUS MEADOW APARTMENTS SIoux FALLS, SOUTH DAKOTA



***Accessible, Affordable Apartments For
Adults With Qualifying Disabilities***

4601 East Brennan Drive
Sioux Falls, South Dakota 57110



Accessible Space, Inc.
HOUSING WITH CARE

CROCUS MEADOW APARTMENTS SIOUX FALLS, SOUTH DAKOTA

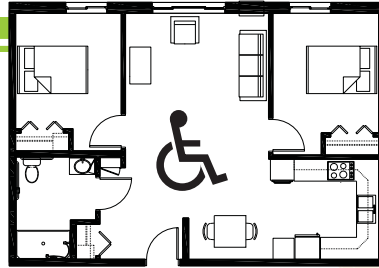
Accessible, Affordable Apartments For Adults With Qualifying Disabilities

AFFORDABLE

- Qualifying households pay 30% of adjusted gross monthly income for rent
- Rent is subsidized by the U.S. Department of Housing and Urban Development (HUD)-Income limits apply
- Rent includes: Heat, water, sewer and trash

BASIC QUALIFICATIONS

- One household member must have a qualifying disability
- Applicants are screened for credit, rental and criminal history
- Households must be income qualified (income limits apply and security deposit required)

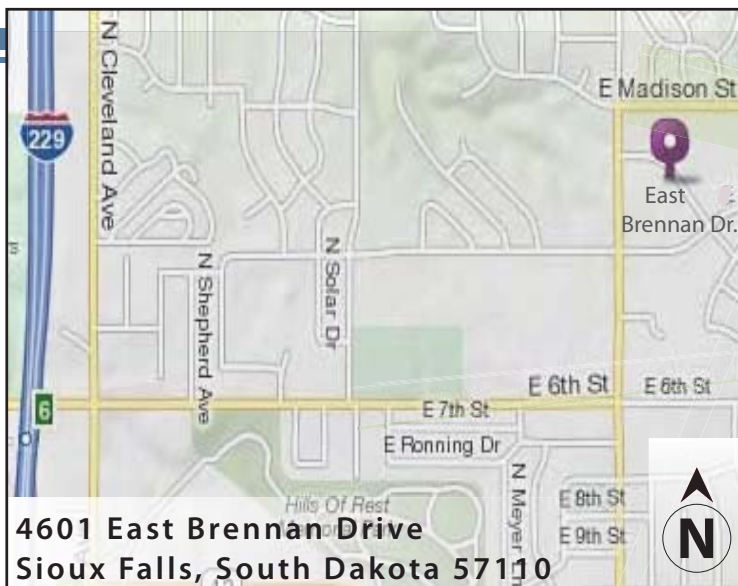


APARTMENT FEATURES

- 15 wheelchair accessible, 1 & 2 bedroom apartments
- Accessible, spacious kitchen
- Large accessible bathroom
- Carpeted bedroom and living room
- Generous closet & storage space
- Level-action door handles
- Wheel-in showers

BUILDING FEATURES

- Open entry & lobby
- Controlled access entry system
- Outdoor patio with gas grill
- Elevator service
- multi-purpose community room
- Raised electrical outlets & lowered light switches
- On-site laundry facilities



CONVENIENT NEIGHBORHOOD LOCATION

- Grocery stores, shopping & restaurants
- Banking Services
- Hospitals, medical & professional clinics
- Churches

For more information or to request a housing application, please call

- toll-free 1-800-466-7722
- tty/tdd 1-800-627-3529

Apply online www.accessiblespace.org

Accessible Space, Inc. (ASI)

2550 University Avenue West, Suite 330 North
Saint Paul, Minnesota 55114

