



# Accessible Space, Inc.

2550 University Avenue West, Suite 330 N | St. Paul, Minnesota 55114

## OUR MISSION HOUSING WITH CARE

The mission of Accessible Space, Inc. (ASI) is to provide accessible, affordable, assisted, supportive and independent living opportunities for persons with physical disabilities and brain injuries as well as seniors. This mission is accomplished through the development and cost-effective management of accessible, affordable housing, assisted/supportive/independent living and rehabilitation services.

## ACKNOWLEDGEMENTS FUNDING AND SUPPORT



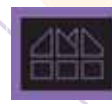
Accessible Space, Inc. (ASI) gratefully acknowledges the following organizations for their funding and/or support:

The U.S. Department of Housing and Urban Development (HUD); The City of Saint Paul; Ramsey County Housing Endowment Fund; Federal Home Loan Bank of Des Moines' Affordable Housing Program/U.S. Bancorp; The Saint Paul Foundation; Mardag Foundation; F.R. Bigelow Foundation and the Jay and Rose Phillips Family Foundation. The Amherst H. Wilder Foundation was the Co-Sponsor of Arlington Gardens.



Committed to the success of equal housing opportunities throughout the nation

ASI



Accessible Space Inc. (ASI):  
Co-Sponsor, Developer and  
Management Agent

## ARLINGTON GARDENS SAINT PAUL, MINNESOTA



***Affordable Independent Living Apartments  
for Seniors age 62 & Better***

110 Arlington Avenue West  
Saint Paul, Minnesota 55117



**Accessible Space, Inc.**  
HOUSING WITH CARE

# Accessible Space, Inc.

## ARLINGTON GARDENS SAINT PAUL, MINNESOTA

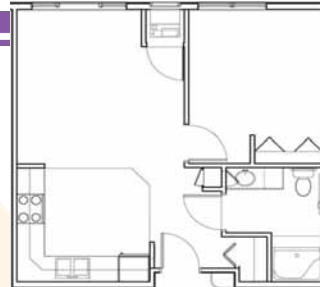
*Accessible, Affordable, Independent Living Apartments for Seniors 62 & Better*

### AFFORDABLE

- Qualifying households pay 30% of adjusted gross monthly income for rent.
- Rent is subsidized by the U.S. Dept. of Housing and Urban Development (HUD).
- Rent includes: Water/sewer, snow and trash removal

### BASIC QUALIFICATIONS

- One household member must be at least 62 years of age.
- Applicants must pass rental, criminal, and credit history search
- Households must be qualified-income limits apply and security deposit required



### APARTMENT FEATURES

- 50 one bedroom apartments
- Spacious kitchens
- Fully carpeted living room & bedroom
- Large step-in showers
- Eight wheelchair accessible units with roll-in showers

### BUILDING FEATURES

- Laundry room and trash chutes on every floor
- Elevator service
- Controlled access entry system
- Spacious community rooms with balconies or patios
- Off-street parking
- Outdoor garden plots & walking path

110 West Arlington Avenue  
Saint Paul, Minnesota 55117



### CONVENIENT NEIGHBORHOOD LOCATION

- Grocery stores, shopping & restaurants
- Banking Services
- Hospitals, medical & professional clinics
- City Park, Churches and Hospital

For more information or to request a housing application, please call

- toll-free 1-800-466-7722
- tty/tdd 1-800-627-3529

Apply online [www.accessiblespace.org](http://www.accessiblespace.org)

Accessible Space, Inc. (ASI)

2550 University Avenue West, Suite 330 North  
Saint Paul, Minnesota 55114

