



# Accessible Space, Inc.

2550 University Avenue West, Suite 330 N | St. Paul, Minnesota 55114

## OUR MISSION HOUSING WITH CARE

The mission of Accessible Space, Inc. (ASI) is to provide accessible, affordable, assisted, supportive and independent living opportunities for persons with physical disabilities and brain injuries as well as seniors. This mission is accomplished through the development and cost-effective management of accessible, affordable housing, assisted/supportive/independent living and rehabilitation services.

## ACKNOWLEDGEMENTS FUNDING AND SUPPORT

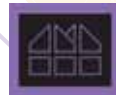
Accessible Space, Inc. (ASI) gratefully acknowledges the following organizations for their funding and/or support:

U.S. Department of Housing and Urban Development (HUD); Montana Department of Commerce-Housing Division HOME Program; City of Bozeman Commissioners/Community Affordable Housing Advisory Board (CAHAB); The Wiggins Foundation; and The Beim Foundation.



Committed to the success of equal housing opportunities throughout the nation

ASI



Accessible Space, Inc. (ASI): Sponsor, Developer and Management Agent

## SPRING RUN APARTMENTS BOZEMAN, MONTANA



***Accessible, Affordable Apartments For Adults With Qualifying Disabilities***

1325 North 15th Avenue  
Bozeman Montana 59715



**Accessible Space, Inc.**

HOUSING WITH CARE

# AccessibleSpace, Inc.

## SPRING RUN APARTMENTS BOZEMAN, MONTANA

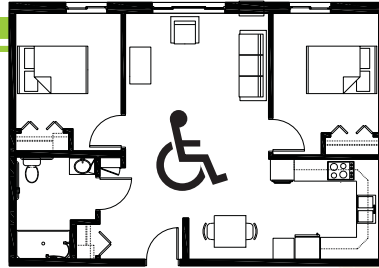
*Accessible, Affordable Apartments For Adults With Qualifying Disabilities*

### AFFORDABLE

- Qualifying households pay 30% of adjusted gross monthly income for rent
- Rent is subsidized by the U.S. Department of Housing and Urban Development (HUD)-Income limits apply
- Rent includes: Heat, water, sewer, trash & snow removal

### BASIC QUALIFICATIONS

- One household member must have a qualifying disability
- Applicants are screened for credit, rental and criminal history
- Households must be income qualified (income limits apply and security deposit required)



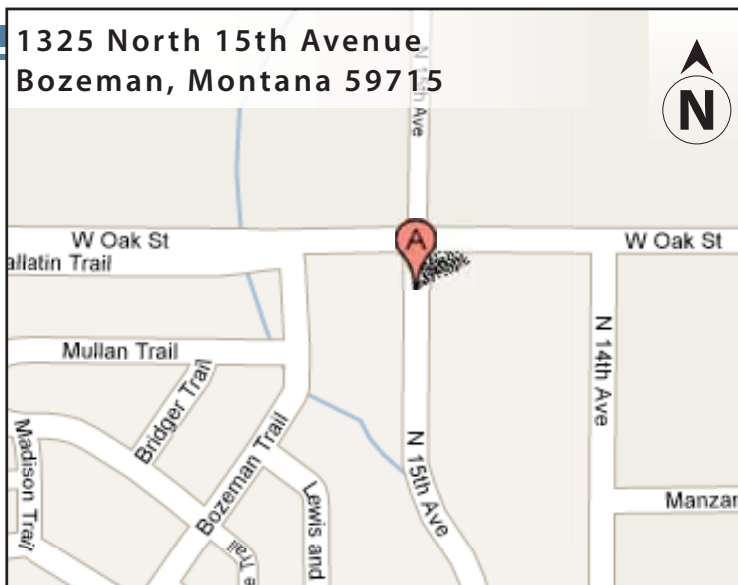
### APARTMENT FEATURES

- 18 accessible 1 & 2 bedroom apartments
- 36 inch wide doors with lever-action handles
- Large roll-in showers
- Roll under kitchen sink, counters and bathroom vanity

### BUILDING FEATURES

- Extra wide common area hallways
- Multipurpose community room
- Outdoor patio with gas grill
- On-site laundry facilities
- Approved pets welcome
- Controlled access main entrance
- Elevator service

1325 North 15th Avenue  
Bozeman, Montana 59715



### CONVENIENT NEIGHBORHOOD LOCATION

- Grocery stores, shopping & restaurants
- Banking Services
- Hospitals, medical & professional clinics
- Churches

For more information or to request a housing application, please call

- toll-free 1-800-466-7722
- tty/tdd 1-800-627-3529

Apply online [www.accessiblespace.org](http://www.accessiblespace.org)

Accessible Space, Inc. (ASI)

2550 University Avenue West, Suite 330 North  
Saint Paul, Minnesota 55114

