



# Accessible Space, Inc.

2550 University Avenue West, Suite 330 N | St. Paul, Minnesota 55114

## OUR MISSION HOUSING WITH CARE

The mission of Accessible Space, Inc. (ASI) is to provide accessible, affordable, assisted, supportive and independent living opportunities for persons with physical disabilities and brain injuries as well as seniors. This mission is accomplished through the development and cost-effective management of accessible, affordable housing, assisted/supportive/independent living and rehabilitation services.

## ACKNOWLEDGEMENTS FUNDING AND SUPPORT

Accessible Space, Inc. (ASI) gratefully acknowledges the following organizations for their funding and/or support:

The U.S. Department of Housing and Urban Development (HUD); The Burlington Northern Foundation; City of Great Falls; First Bank/Great Falls; First Interstate Bank System Foundation, Inc.; General Mills Foundation; Great Falls Gas Company; Maguire Foundation, Montana Federal Credit Union; Montana Department of Public Health and Human Services; MPCO/Entech Foundation, Inc.; and the Titcomb Foundation.



Committed to the success of equal housing opportunities throughout the nation

ASI



Accessible Space Inc. (ASI):  
Sponsor, Developer and  
Management Agent

## SOUTHWINDS ESTATES GREAT FALLS, MONTANA



***Accessible, Affordable Apartments For  
Adults With Qualifying Disabilities***

1615 Oasis Court  
Great Falls, Montana 59405



**Accessible Space, Inc.**  
HOUSING WITH CARE

# AccessibleSpace, Inc.

## SOUTHWINDS ESTATES GREAT FALLS, MONTANA

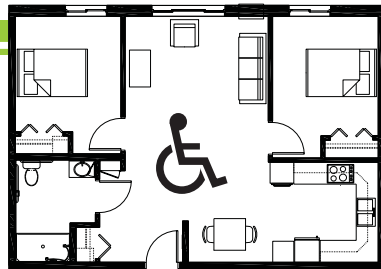
*Accessible, Affordable Apartments For Adults With Qualifying Disabilities*

### AFFORDABLE

- Qualifying households pay 30% of adjusted gross monthly income for rent
- Rent is subsidized by the U.S. Department of Housing and Urban Development (HUD)-Income limits apply
- Rent includes: Heat, water, sewer, trash & snow removal

### BASIC QUALIFICATIONS

- One household member must have a qualifying disability
- Applicants are screened for credit, rental and criminal history
- Households must be income qualified (income limits apply and security deposit required)

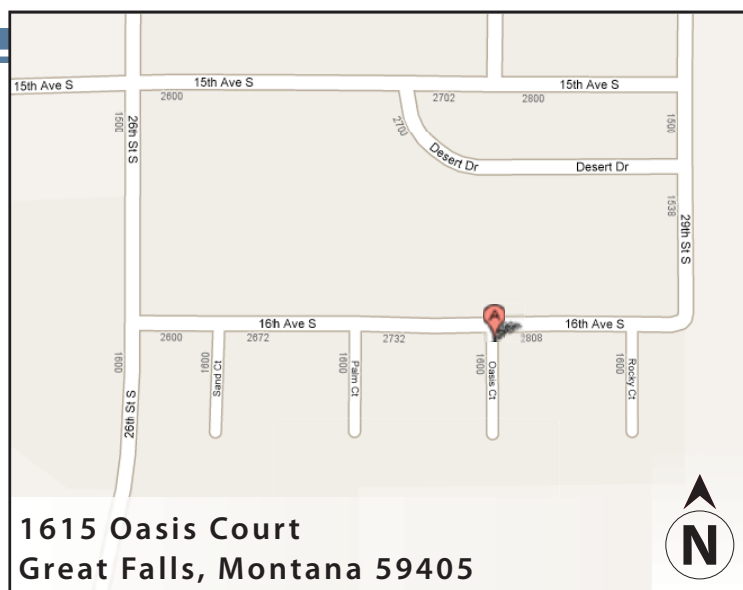


### APARTMENT FEATURES

- 24 accessible, one and two bedroom apartments
- Spacious accessible kitchens
- Large accessible bathrooms
- Carpeted bedroom & living room
- Air conditioning & window blinds
- Roll-in showers

### BUILDING FEATURES

- Accessible main entrance
- Controlled access entry system
- Large community room & outdoor patio
- Approved pets welcome!
- On-site laundry facilities
- Off-street parking



### CONVENIENT NEIGHBORHOOD LOCATION

- Grocery stores, shopping & restaurants
- Banking Services
- Hospitals, medical & professional clinics
- Churches

For more information or to request a housing application, please call

- toll-free 1-800-466-7722
- tty/tdd 1-800-627-3529

Apply online [www.accessiblespace.org](http://www.accessiblespace.org)

Accessible Space, Inc. (ASI)

2550 University Avenue West, Suite 330 North  
Saint Paul, Minnesota 55114

