



# Accessible Space, Inc.

2550 University Avenue West, Suite 330 N | St. Paul, Minnesota 55114

## OUR MISSION HOUSING WITH CARE

The mission of Accessible Space, Inc. (ASI) is to provide accessible, affordable, assisted, supportive and independent living opportunities for persons with physical disabilities and brain injuries as well as seniors. This mission is accomplished through the development and cost-effective management of accessible, affordable housing, assisted/supportive/independent living and rehabilitation services.

## ACKNOWLEDGEMENTS FUNDING AND SUPPORT

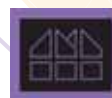
Accessible Space, Inc. (ASI) gratefully acknowledges the following organizations for their funding and/or support:

The U.S. Department of Housing and Urban Development (HUD); and The Federal Home Loan Bank of Atlanta's Affordable Housing Program/Regions Bank. The Alabama Head Injury Foundation (AHIF) was the Co-Sponsor for the Anderson-Fischer Apartments.



Committed to the success of equal housing opportunities throughout the nation

ASI



Accessible Space, Inc. (ASI): Co-Sponsor, Developer and Management Agent

## ANDERSON-FISCHER APARTMENTS MOBILE, ALABAMA



***Accessible, Affordable Apartments For Adults With Qualifying Disabilities***

8479 Jeff Hamilton Road Extension  
Mobile, Alabama 36695



**Accessible Space, Inc.**  
HOUSING WITH CARE

## ANDERSON-FISCHER APARTMENTS MOBILE, ALABAMA

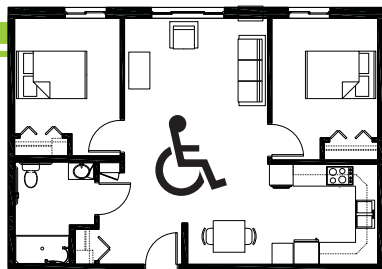
*Accessible, Affordable Apartments For Adults With Qualifying Disabilities*

### AFFORDABLE

- Qualifying households pay 30% of adjusted gross monthly income for rent
- Rent is subsidized by the U.S. Department of Housing and Urban Development (HUD)-Income limits apply
- Rent includes: Heat, water, sewer and trash

### BASIC QUALIFICATIONS

- One household member must have a qualifying disability
- Applicants are screened for credit, rental and criminal history
- Households must be income qualified (income limits apply and security deposit required)

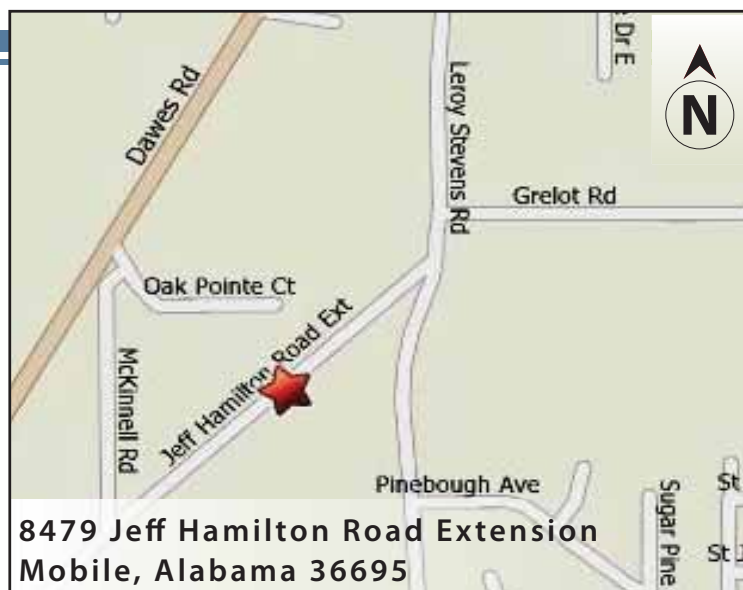


### APARTMENT FEATURES

- 19 wheelchair accessible, 1 & 2 bedroom apartments
- Accessible, spacious kitchen
- Large accessible bathroom
- Carpeted bedroom and living room
- Generous closet & storage space
- Level-action door handles
- Wheel-in showers

### BUILDING FEATURES

- Open entry & lobby
- Controlled access entry system
- Outdoor patio with covered porch
- Elevator service
- multi-purpose community room
- Raised electrical outlets & lowered light switches
- On-site laundry facilities



### CONVENIENT NEIGHBORHOOD LOCATION

- Grocery stores, shopping & restaurants
- Banking Services
- Hospitals, medical & professional clinics
- Churches

For more information or to request a housing application, please call

- toll-free 1-800-466-7722
- tty/tdd 1-800-627-3529

Apply online [www.accessiblespace.org](http://www.accessiblespace.org)

Accessible Space, Inc. (ASI)

2550 University Avenue West, Suite 330 North  
Saint Paul, Minnesota 55114

